

Responding to COVID at OCU

Keeping Stars Safe, Activity by Activity

07-2020



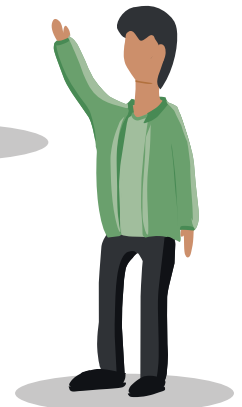
COVID-19 Alert Levels

OCU PRACTICES



Alert Levels

<i>(Most Restrictive)</i> VERY HIGH ALERT LEVEL Only Essential Operations	HIGH ALERT LEVEL Low-Density Operations	MODERATE ALERT LEVEL Medium-Density Operations	<i>(Least Restrictive)</i> LOW ALERT LEVEL High-Density Operations
<p><u>Stay-at-home orders</u> are in place, schools and non-essential businesses are closed, and individuals are expected to practice self-isolation.</p>	<p><u>State-by-State Reopening:</u> OCU and local communities can operate low-density environments. OCU is open, but significant prevention policies are in place and may include limits on meeting sizes, enforced PPE use, and continued elevated precautions for high-risk Individuals.</p>	<p><u>Protections in Place:</u> OCU and local communities can operate moderate-density environments. OCU is open, and many protective measures are still actively in place. The underlying threat of the virus is lower and testing and contract tracing capacities are robust enough to allow some policies to be relaxed. There may also be some treatments for the disease, which lower the risk for severe outcomes.</p>	<p><u>New Normal:</u> OCU and local communities can operate high-density environments. After vaccines and/or highly effective treatments are approved and widely available, and there is low circulation of the coronavirus, prevention practices can gradually be lifted more fully. It is likely that even when immune protection is established, social interactions will remain changed for a duration of time and that re-engineered processes and new technologies persist, as long as they are functional.</p>



Institutional Operations

Local schools and non-essential businesses remain closed and individuals are expected to practice self-isolation. Campus and building access are restricted. Telework is the preferred choice for as many employees as possible in accordance with state/local mandates. Instruction is remote, and in-person housing and in-person academic programs are canceled.

Instruction is primarily remote. In-person instruction is limited to clinical/practicum activities that are difficult to conduct remotely. Small groups (<10, including the instructor) may convene with special permission. Significant prevention policies are in place, which may include limitations on meeting sizes, enforced PPE use, screening, contact tracing, and selective quarantining/self-isolation.

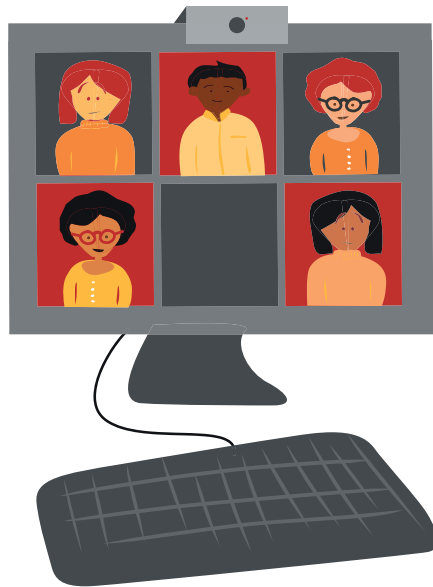
Limited access to facilities. Limited small group instruction (<10) for graduate students. High-needs students; specialized programs. No shared offices for faculty/staff/students. Strict distancing, face covering, and frequent hand-washing.

Instruction is a mix of in-person and remote instruction with online options for in-person classes (hybrid) where practical. Some students and faculty will not be able to return to campus, and reasonable accommodations are put in place to enable continued academic progress.

Easing facility restrictions; rigorous cleaning and PPE protocols; low-density instruction with 6-foot diameter per student; limited specialized facility access (labs, studios, practice rooms); shared offices with distancing measures; strict distancing, face covering, and frequent hand-washing.

Once vaccines and/or highly effective and widely available treatments are approved for the coronavirus, prevention practices can be lifted. It is likely that even when immune protection is established, that social interactions remain changed for a duration of time and that re-engineered processes and new technologies persist, as long as they are functional.

Classrooms near full capacity; shared office spaces; dining and residential activities with some modifications.



What practices will OCU observe for each activity based on the alert levels?

Activities

	<i>(Most Restrictive)</i> VERY HIGH ALERT LEVEL Only Essential Operations	HIGH ALERT LEVEL Low-Density Operations	MODERATE ALERT LEVEL Medium-Density Operations	<i>(Least Restrictive)</i> LOW ALERT LEVEL High-Density Operations
Orientation, Pre-Arrival Travel	N/A, only essential students and staff on campus.	Students with COVID-19 <i>or</i> flu-like symptoms, or students from areas of high COVID-19 transmission, will self-isolate or quarantine for a predetermined period of time.	Students with COVID-19 <i>or</i> flu-like symptoms, or students from areas of high COVID-19 transmission, will self-isolate or quarantine for a predetermined period of time.	Any student with COVID-19 <i>or</i> flu-like symptoms self-quarantines for a predetermined period of time.
Orientation, Residence Halls Move-Ins	N/A, only essential students and staff on campus.	Students move into residence halls in small-sized groups (10 or fewer) with physical distancing in place.	Students move into residence halls in medium-sized groups (20 or fewer) with physical distancing in place.	Students may move into dorms as usual.
Orientation, Residence Halls Move-Ins (Equipment)	N/A, only essential students and staff on campus.	There will be no move-in equipment available. Students will be required to bring their own.	Move-in equipment is checked out by students and disinfected after each use.	Move-in equipment is checked out by students and disinfected after each use.
Orientation, In-Person Activities	N/A, only essential students and staff on campus.	Limit any in-person activities to small-sized groups (10 or fewer) with physical distancing.	Limit any in-person activities to small-sized groups (25 or fewer) with physical distancing.	No limits on in-person activities.
Classrooms, Class Enrollment/Size	N/A, students not on campus. Instruction is fully remote/ virtual.	Classes of 25+ should be fully online/remote. Classes of fewer than 25 students should be held in classrooms where physical distancing is possible.	Classes of 50+ should be fully online/remote or combination to ensure physical distancing can occur. Classes of fewer than 50 students should be held in classrooms where physical distancing is possible.	All classes may return to full occupancy.

Activities

	(Most Restrictive) VERY HIGH ALERT LEVEL Only Essential Operations	HIGH ALERT LEVEL Low-Density Operations	MODERATE ALERT LEVEL Medium-Density Operations	(Least Restrictive) LOW ALERT LEVEL High-Density Operations
Classrooms, Lecture Halls	N/A, students not on campus. Instruction is fully remote/virtual.	Lecture halls should be used for classes of fewer than 25 students, but only if physical distancing can take place.	Lecture halls should be used for classes of fewer than 50 students but only if physical distancing can take place.	All lecture halls may return to full occupancy.
Classrooms, Specialized	N/A, students not on campus. Instruction is fully remote/virtual.	In-person access granted on a restricted basis requiring approval; increased health safety protocol in place.	Small group access on a limited basis following institutional distancing policy and using increased cleaning protocols.	Near or at full capacity.
Religious Services	Virtual only.	Virtual or small groups of fewer than 10 abiding by health safety protocols. No contact or sharing between individuals.	Small group religious services may be held as long as they abide by health safety protocols. Larger services may be held outdoors or in large venues with appropriate social distancing and clear guidance on entry and dismissal.	Religious services resume in full.
Events (Assemblies, Info Sessions, Meetings, etc.)	Virtual only.	Virtual or small groups of fewer than 10 abiding by health safety protocols. No contact or sharing between individuals.	Large events may be held outside or in venues that allow for appropriate social distancing practices. Clear guidance on entry and dismissal is established.	No restrictions on event size or cadence.
Shared Office Spaces	Essential workers may continue work in shared spaces with health safety measures observed.	Capacity limitations are established. Most work remains remote, and essential use of shared spaces is planned to not exceed capacity limitations.	Capacity limitations are established. Most work remains remote, and health safety practices are honored for those in the workspace.	No restrictions on shared office spaces.
Labs	Essential employees only, abiding by health safety protocols with increased PPE.	Managed through approved plans; capacity limitations are established to ensure physical distancing.	Managed through approved plans; capacity limits will be revisited.	No restrictions on capacity or interaction with equipment.

Activities

	(Most Restrictive) VERY HIGH ALERT LEVEL Only Essential Operations	HIGH ALERT LEVEL Low-Density Operations	MODERATE ALERT LEVEL Medium-Density Operations	(Least Restrictive) LOW ALERT LEVEL High-Density Operations
University Library Spaces	Focus on providing digital materials; curbside pickup by appointment; curbside drop-off; materials sequestered upon return based on current guidance; limited number of library staff only allowed in the building.	Focus on providing digital materials; curbside pickup by appointment; curbside drop-off; materials sequestered upon return based on current guidance; in-person access to noncirculating collections for current students, faculty, and staff by appointment	Focus on providing digital materials; curbside pickup by appointment; curbside drop-off; materials sequestered upon return based on current guidance; in-person access to noncirculating collections for the broader community by appointment; regular access to the library for current students, faculty, and staff while maintaining social distancing.	Regular access to the library for current students, faculty, and staff and the broader community while maintaining social distancing; curbside pickup and drop-off also available.
Classrooms Buildings, Hallways	N/A, students not on campus. Instruction is fully remote/virtual.	Classes should be scheduled with increased breaks between class so students can leave classrooms without crowding hallways. High-touch surfaces should be sanitized regularly (multiple times a day).	Classes should be scheduled with sufficient breaks between class so students can leave classrooms without crowding hallways. Consider dismissing students in groups of 10. High-touch surfaces should be sanitized regularly.	Normal health safety protocols.
Residence Halls, Occupancy Levels	One student per room, dorms are only open for students who must stay on campus due to visa requirements or home situations.	If the institution has capacity, limit to 1 per room, not to exceed 2 students per room or 4 students to an apartment.	If the institution has capacity, limit to 2 students per bedroom and 4 to an apartment.	No restrictions on room occupancy.
Residence Halls, Common Areas	Common areas closed.	Common areas closed.	Minimum of 6-foot distancing measures are in place in all common areas.	Students may use common areas as usual, but consider increased cleaning measures.
Residence Halls, Laundry Facilities	Students may use laundry facilities as usual with increased cleaning and social distancing measures.	Students may use laundry facilities as usual with increased cleaning and social distancing measures.	Students may use laundry facilities as usual with increased cleaning and social distancing measures.	Students may use laundry facilities as usual, but consider increased cleaning measures.

Activities

	(Most Restrictive) VERY HIGH ALERT LEVEL Only Essential Operations	HIGH ALERT LEVEL Low-Density Operations	MODERATE ALERT LEVEL Medium-Density Operations	(Least Restrictive) LOW ALERT LEVEL High-Density Operations
Residence Halls, Cleaning	N/A, most students not on campus.	New cleaning protocols in place; no shared surfaces, such as desks, keyboards, and phones; common areas closed.	Cleaning protocols remain; limited shared surfaces; some common areas reopen with distancing rules.	Routine cleaning of residence halls.
Cokesbury Apartments, Packages	Packages delivered to student's apartment door.	Packages in Cokesbury can only be picked up by students calling the posted phone number for assistance. Housing office is closed.	Cokesbury office is open for students to pick up packages, but increased cleaning and social distancing measures are taken.	Packages are accepted, and mailrooms are open.
Dining, Occupancy Level Approach	N/A, students not on campus. Any students still on campus should have food delivered or cook in room.	Dining services available on a to-go basis only, or with adequate physical distancing, signage, and cleaning protocols.	Dining facilities are limited to 66% capacity with physical distancing maintained and additional spaces offered for overflow seating.	Dining facilities at or near room occupancy levels.
Dining, To-Go Options	N/A, students not on campus.	Students may enter dining facilities to pick up food in groups of 10 or fewer. Students must follow physical distancing guidelines while waiting in line.	Students may enter dining facilities freely but must follow physical distancing guidelines while waiting in line.	Students can pick up food freely during set hours of the day, while maintaining physical distance guidelines.
Dining, Serving Style	N/A, students not on campus.	Self-service/buffet stations should be closed or converted. All condiments should be single-use and disposable. All plates, cups, and utensils should also be disposable.	Self-service/buffet stations should remain closed or converted. Consider reopening condiment and soda fountain stations with extra cleaning between use. All plates, cups, and utensils should also be disposable.	Self-service stations may reopen with increased cleaning between patron use. Consider installing sneeze guards at self-service stations. Return to reusable plates, cups, and utensils.

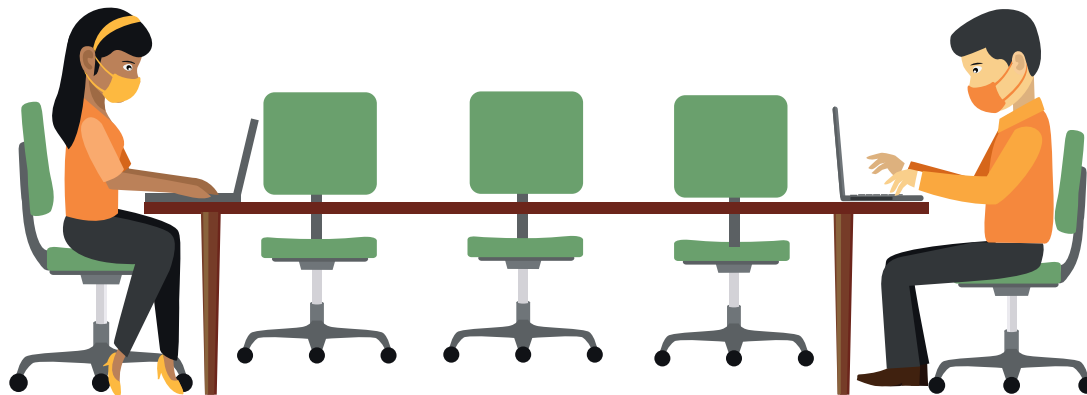
Activities

	<i>(Most Restrictive)</i> VERY HIGH ALERT LEVEL Only Essential Operations	HIGH ALERT LEVEL Low-Density Operations	MODERATE ALERT LEVEL Medium-Density Operations	<i>(Least Restrictive)</i> LOW ALERT LEVEL High-Density Operations
Athletics, Athletic Activities	N/A, students not on campus.	Individual sports or activities that can be executed in a socially distant manner may be allowed.	Athletic activities may resume with testing and screening protocols for participants.	All athletic activities may resume without restrictions.
Fitness Facilities, Cardio and Weights	N/A, students not on campus.	Cardio closed. Weight room should be closed, or consider moving weights outside to maximize airflow. If outside, enforce wipe-down of weights after each use, plus physical distancing.	Stagger or spread exercise equipment to maintain distance of at least 6 feet. Students must sign up in advance to use cardio machines and should wipe down machines after each use. Physical distancing should be in place.	Weight room can function as normal, with encouraged increase in cleaning after each use. Cardio room can function as normal, with encouraged increase in cleaning after each use.
Fitness Facilities, Sports Courts, Basketball, Volleyball, etc.	N/A, students not on campus.	Sports courts should be closed.	Students must sign up to use sports courts in advance, and courts should be operating on a limited schedule.	Sports courts can operate as usual.
Fitness Facilities, Water Fountains	N/A, students not on campus.	Water fountains should be closed. Patrons should bring their own beverages.	Water stations should be cleaned frequently.	Water stations should be cleaned frequently.
Fitness Facilities, Locker Rooms and Showers	N/A, students not on campus.	Locker rooms and showers are closed, and towel service is halted.	Locker rooms should be regularly and frequently sanitized. Physical distancing should be in place in locker rooms. Showers are closed, and towel service is halted.	Locker rooms can be used as normal, but physical distancing should be encouraged.
Fitness Facilities, Laundry Facilities	N/A, students not on campus.	Fitness center laundering capabilities are closed.	Laundry facilities open for athletic department purposes only. Physical distancing in place in the laundry rooms.	Fitness center laundry facilities can operate as usual.
Cokesbury, Pool	Pool is closed.	Pool is closed.	Students may use the pool, but occupancy limits and enhanced cleaning measures will be taken.	Pool can operate as usual.

How will we protect the health of the OCU community at different alert levels?

Mitigation Strategies

	<i>(Most Restrictive)</i> VERY HIGH ALERT LEVEL Only Essential Operations	HIGH ALERT LEVEL Low-Density Operations	MODERATE ALERT LEVEL Medium-Density Operations	<i>(Least Restrictive)</i> LOW ALERT LEVEL High-Density Operations
Social Distancing	Required for essential employees still on campus	Required	Required	Not required; recommended indoors.
Use of Mask or Cloth Face Covering	Required for essential employees still on campus	Required	Required	Not required; recommended indoors.
Hand-Washing	Required for essential employees still on campus	Required	Required	Required
Covering Coughs and Sneezes	Required for essential employees still on campus	Required	Required	Required
Stay Home if Sick	Required for essential employees still on campus	Required	Required	Required



Mitigation Strategies

Testing and Exposure Response Protocol

Education and Training

Cleaning and Disinfection Protocol

Accommodate Members at Higher Risk for Severe Illness

	<i>(Most Restrictive)</i> VERY HIGH ALERT LEVEL Only Essential Operations	HIGH ALERT LEVEL Low-Density Operations	MODERATE ALERT LEVEL Medium-Density Operations	<i>(Least Restrictive)</i> LOW ALERT LEVEL High-Density Operations
Testing and Exposure Response Protocol	In place and communicated to campus community.	In place and communicated to campus community.	In place and communicated to campus community.	In place and communicated to campus community.
Education and Training	Ongoing, based on current guidance.	Ongoing, based on current guidance.	Ongoing, based on current guidance.	Ongoing, based on current guidance.
Cleaning and Disinfection Protocol	Increased in high-traffic areas; protocol in place for affected areas.	Increased in high-traffic areas; protocol in place for affected areas.	Increased in high-traffic areas; protocol in place for affected areas.	Increased in high-traffic areas; protocol in place for affected areas.
Accommodate Members at Higher Risk for Severe Illness	Policy and process in place	Policy and process in place	Policy and process in place	Policy and process in place

